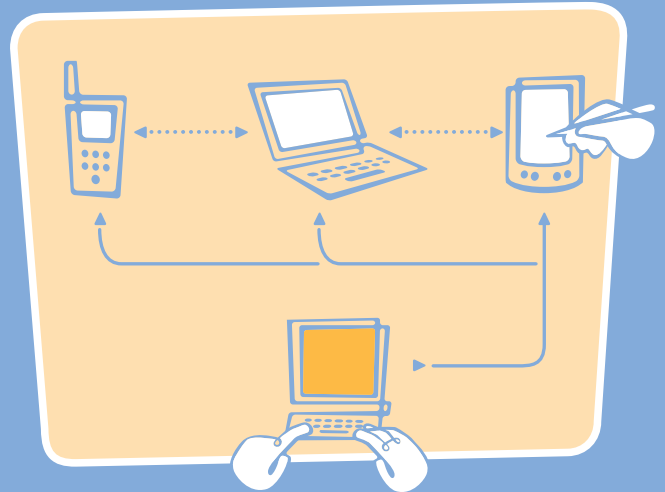


IMPRONTO DEVELOPER KIT - PALM OS

OVERVIEW

Impronto™ Developer Kit is a standards-based Java tool designed to make building Bluetooth™ applications easy. Impronto's framework hides complex Bluetooth protocols behind standard Java application programming interfaces (APIs), letting developers focus on writing wireless applications rather than on low-level Bluetooth networking issues. The result is faster, easier construction of Bluetooth applications.



BENEFITS

- Cuts application development time
- Reduces the Bluetooth learning curve
- Prevents dependencies on proprietary technology
- Protects applications from dependencies on low-level Bluetooth stack technology
- Runs applications on Bluetooth devices that support Java

FEATURES

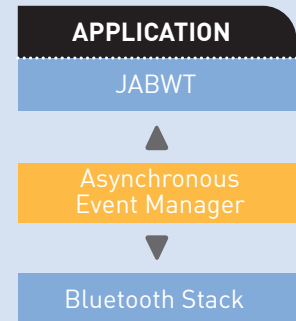
- Implements standard Java APIs for Bluetooth Wireless Technology (JABWT)
- Provides abstractions of Bluetooth wireless communication using the Java 2 Platform, Micro Edition (J2ME) Generic Connection Framework
- Based on J2ME Connected Limited Device Configuration (CLDC)
- Addresses primary Bluetooth profiles:
 - + Generic Access Profile
 - + Service Discovery Profile
 - + Serial Port Profile
 - + Generic Object Exchange Profile
- Includes industry-leading WebSphere Micro Environment (J9) from IBM™
- Includes demo applications
- Includes BCC and security for 1.0

IMPRONTO DEVELOPER KIT - PALM OS EDITION

IMPRONTO DEVELOPER KIT ARCHITECTURE

Impronto is written as a set of Java classes that provides a layer of services when installed on a target device.

The **JABWT** layer is a standards-based API for common Bluetooth abstractions (RFCOMM, SDP, L2CAP, HCI, OBEX, etc.). These services are based on Sun™ standard Java APIs for Bluetooth Wireless Technology (as defined by Java Community Process Expert Group JSR-82).



PLATFORMS AND HARDWARE

- Operating System: Palm OS version 4.0 and higher
- Bluetooth Stack: Palm Bluetooth APIs
- Java Virtual Machine: IBM's WebSphere Micro Environment (J9) (included)
- Supported Hardware: Palm m500, m505
- Supported Bluetooth Hardware: Palm Bluetooth SD card, TDK Systems Bluetooth Palm Developer Kit

COMMENTS

"Impronto DK is fast and easy to install and to use. It really delivers on Rococo's promise to make building Bluetooth applications easier."

- Joe Drumgoole, Director of Engineering, Cape Clear Software Inc.

"Layering Java on top of Bluetooth is one of the best ways to support the creation of a range of new flexible applications, and the introduction of standardized Bluetooth-Java APIs is a key part of the process."

- Daniel Beaumont, Planet Wireless, www.telecoms.com/planetwireless



rococo software 9-11 Upper Baggot Street, Dublin 4, Ireland
toll free in US: 01800 rococo4u (76262648) or UK +800 rococo4u
t: +353 1 660 1315 f: +353 1 660 1328 e: info@rococosoft.com

www.rococosoft.com