



iFoundry Systems™ Continua Health Manager Software System

iFoundry Systems Health Manager Software (HMS) system is a Continua™ IEEE 11073-20601 compliant application that allows data to be captured from Continua™ based medical devices, and Roche™ Diagnostics Accucheck™-IR based Glucose Meters.

The application supports the Bluetooth™ Health Device Profile and allows data to be captured from Continua™ compliant devices that support Bluetooth. The software can be configured to support emerging standards, such as Bluetooth™ Low Energy, as well as TCP-IP based medical devices (Ethernet), and any proprietary communication scheme

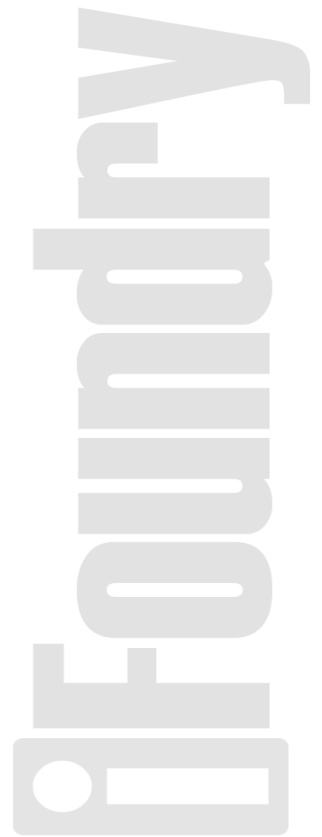
The software is customizable and is intended to be used by OEM device manufacturers to build Continua™ compliant applications that allow data to be transferred from their devices, as well as application developers interested in interfacing their new or pre-existing Clinical/Hospital management systems with Continua™ compliant medical devices.

The software can be provided as a standalone system, based on customer's database format requirements, or customized at the GUI or database level. The key features of the HMS system are:

- Supports the IEEE 11073-20601 Optimized Exchange Protocol (OXP) for Personal Health Devices.
- Supports Roche's Accucheck-IR protocol for communication with Roche's range of Acchucheck Glucose Meters.
- The following IEEE Device Specializations:

11073-10404	Pulse Oximeter
11073-10408	Thermometer
11073-10415	Weighing scale
11073-10417	Glucose meter
11073-10441	Cardiovascular fitness and activity
11073-10442	Strength fitness equipment
11073-10471	Independent living activity hub

- Integrated Bluetooth 2.1+EDR Stack with support for the Bluetooth Health Device Profile Version 1.0, and customizable Bluetooth Radio support.



SINGAPORE
iFoundry Systems Singapore
 Unit 03-20/22
 67 Ayer Rajah Crescent
 Singapore 139950
 Tel: +65 6777 9750
 Fax: +65 6778 9005
 Email: sales@ifoundrysys.com
 Web: www.ifoundrysys.com

EUROPE
ARS Software GmbH
 Starnberger Str. 22
 D-82131 Gauting
 Munchen, Germany
 Tel: +49 (89) 893 4130
 Fax: +49 (89) 8934 1310
 Email: info@ars2000.com

Copyright © 2010 iFoundry Systems Singapore Pte Ltd ("IFS"). All Rights Reserved.

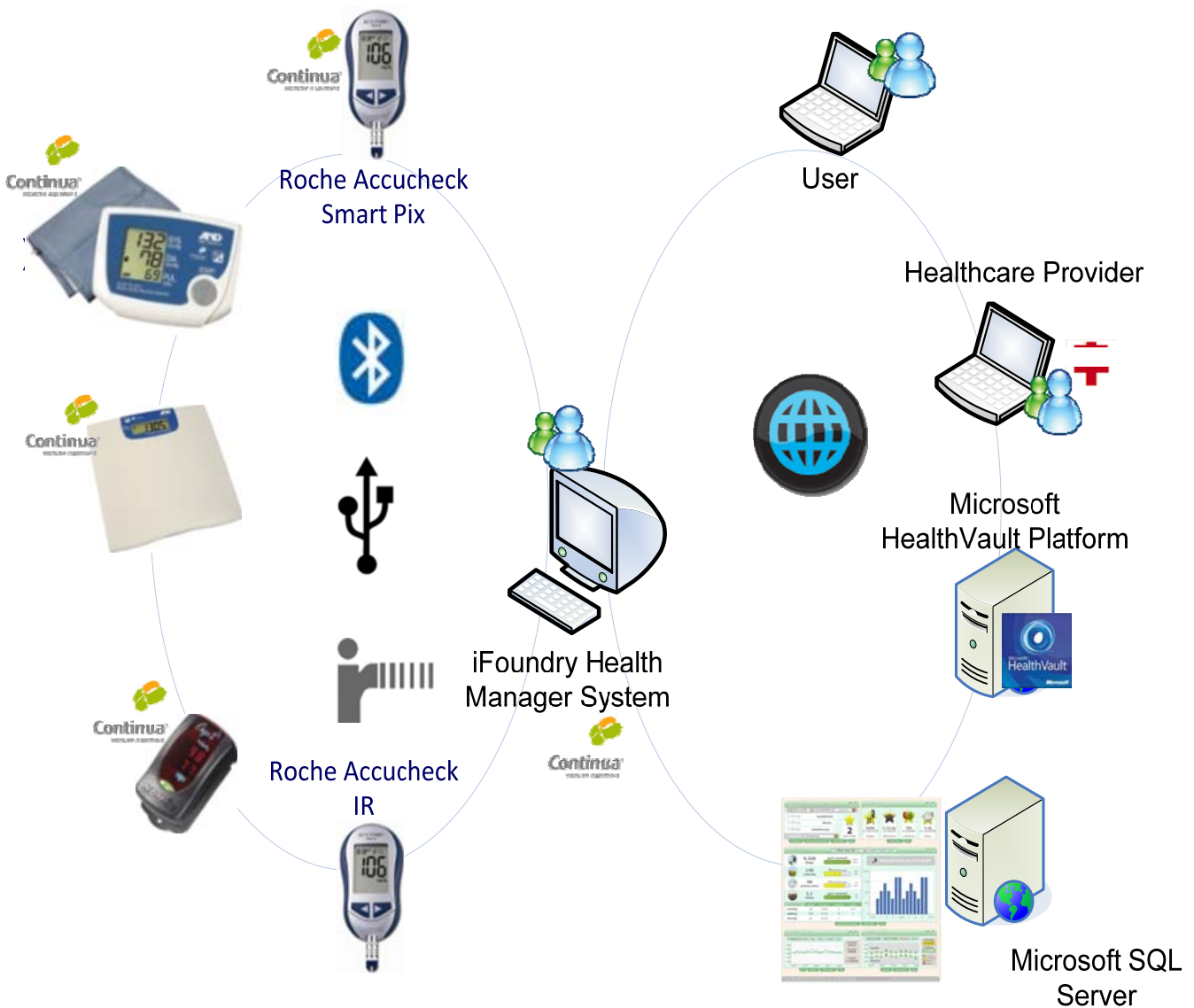
Windows TM and product derivations are trademarks of Microsoft Inc. All other trademarks and trade names are those of their respective owners.

IFS makes no warranties with respect to this document and disclaims any implied warranties of merchantability and fitness for a particular purpose. Information in this document is subject to change without notice. While every attempt is made to ensure accuracy, IFS shall not be liable for any errors or omissions that may appear in this document.



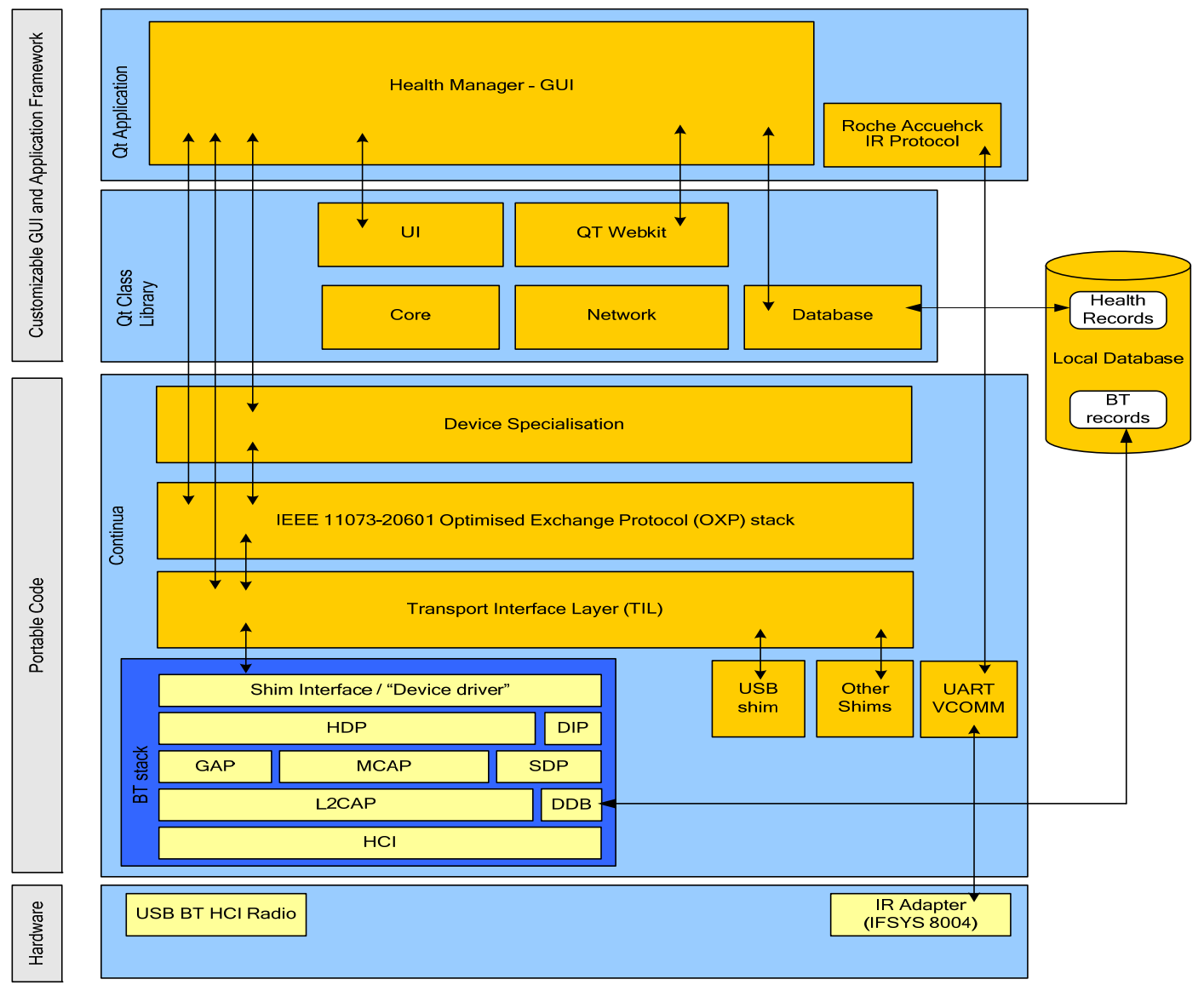
- Support for SQLite database, for local storage of data records, and support for HTTP based posting to remote Microsoft™ SQL Server databases.
- Support for Nokia QT™ Framework, allowing for rapid UI customization and language localization. Application can be rapidly ported to other QT™ based hardware/operating systems, including Mobile phone systems based on QT™.

System Diagram





Software Diagram



Further Information

For further product information , customization requests, please contact sales@ifoundry.com.



Specifications

- Current software version : Rel 1.7
- Available transport shims: Bluetooth (HDP), USB (PHDC), TCP, UART
- Bluetooth stack
 - Based on iAnywhere Blue SDK V3.x
 - Pre-qualified Continua compliant HDP
- Integration with Frontline IEEE-11073 Sniffer + Analyzer
- Support for Device Specializations:
 - Pulse Oximeter
 - Thermometer
 - Blood Pressure Monitor
 - Weight Scale
 - Glucose Meter
 - Independent Living Activity Hub
 - Cardiovascular Activity Monitor
 - Strength and Fitness Equipment
- Support for QT Framework allowing rapid UI customization, and language localization. Application can also be ported to other platforms rapidly. Supported Platforms:
 - Microsoft Windows XP
 - Microsoft Windows 7 (planned)
 - Android (planned)
- Tested products:
 - AND Medical UC-321PBT Weighing Scale
 - AND Medical UA-767PC Blood Pressure Monitor (via Cypak CPX168 module)
 - Roche Smart PIX IR Adapter for Accu-Chek glucose meters,
 - Nonin Onyx II 9560 Pulse Oximeter.